

GOLD COUNTRY

WEALTH OF ADVENTURE

Gold! Colorado's gold rush began in 1859 when the first significant deposits were discovered near Idaho Springs and Clear Creek near Denver. The fever spread, though slowly, to the Pikes Peak area.

In 1890 and 1891 prospectors discovered the rich gold ore that touched off the legendary Cripple Creek & Victor Gold Rush. The ranching country on Pikes Peak's western slopes was quickly transformed as prospectors flocked to the area to seek their fortunes in gold.

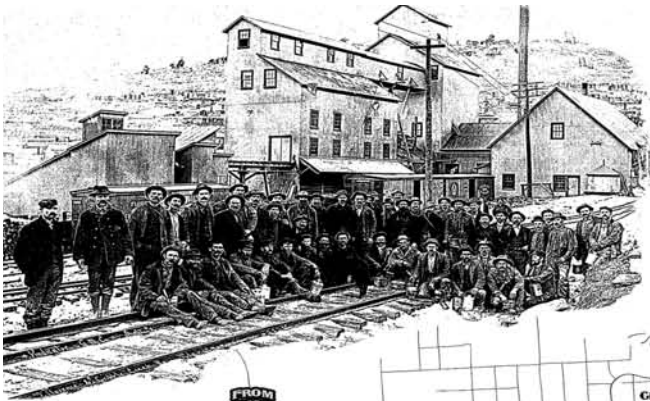
With the discovery of gold, it became a priority to link the Cripple Creek and Victor Mining District to Colorado Springs, Florence and beyond. Stage roads and three railroads were built to carry construction materials, food, clothing, coal, ore and people to and from the mining district towns and goldfields.

Some of those historic rail routes now comprise the segments of a grand loop of back country adventure called the Gold Belt National Scenic Byway (see map on page 6). Still other historic routes offer more opportunities to explore the 1890's connections to Florissant and Colorado Springs.

Touring the southern portion of the Gold Belt leads you through historic milling towns, where today rafting, antiquing, fossils and dinosaur remains are unique attractions - the Royal Gorge Country.

The northern part of the Gold Belt is Colorado's Gold Country - the famous Cripple Creek & Victor Gold Mining District. The Golden Loop, a side tour of the Gold Belt, offers an up-close look at the 1890's mining structures via The Trails of Gold, scenic drives, mountaintop overlooks, mining exhibits and museums. It is a perfect outing for a day or a week.

Along the Golden Loop are historic and modern mining and milling operations, remnants of railroading, active ranching, the social center of Cripple Creek, and the working towns of Victor and Goldfield. If you like to venture off the beaten track, historic inns offer a perfect home away from home while you explore Colorado's Gold Country.



HISTORIC SITES

1. GILLETT
2. GOLDFIELD
3. AMERICAN EAGLES
4. INDEPENDENCE MINE/GRESSON ORE SORTING HOUSE
5. INDEPENDENCE MILLSITE
6. GRESSON HEADFRAME
7. GOLD COIN MINE
8. BATTLE MTN. KIOSK
9. VICTOR HOWELL THOMAS MUSEUM AND DOWNTOWN WALKING TOUR/CITY HALL
10. SUNNYSIDE CEMETERY
11. MOLLIE KATHLEEN MINE
12. PIKES PEAK HERITAGE CENTER
13. POVERTY GULCH
14. MT. PISGAH CEMETERY
15. CRIPPLE GREEK DISTRICT MUSEUM
16. OLD HOMESTEAD HOUSE MUSEUM
17. OUTLAWS AND LAWYERS JAIL MUSEUM

TRAILS

18. VINDICATOR VALLEY TRAIL
19. BATTLE MTN. TRAIL
20. INDEPENDENCE MILL SITE TRAIL
21. GOLDEN GIRCLE TRAIL
22. LITTLE ROUSE MTN. TRAIL
23. GOLD CAMP TRAIL

